

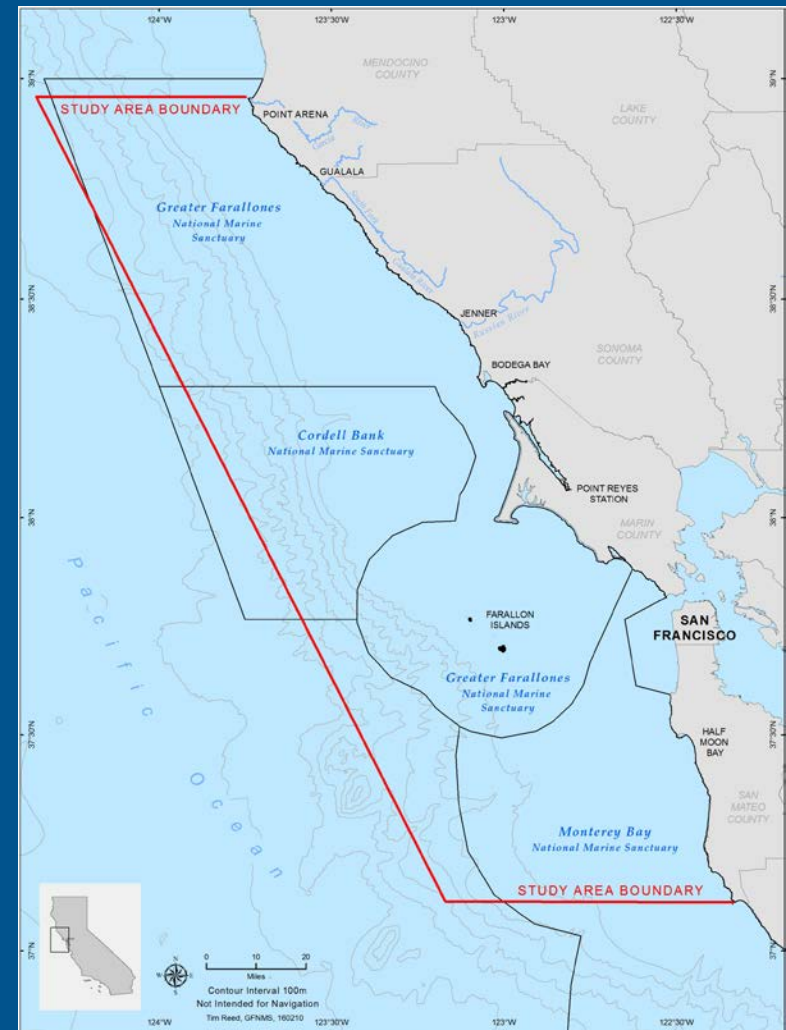
# Climate-Smart Adaptation for the North-central California Coast and Ocean

## Goal

Protect and maintain healthy ecosystems by enhancing the resilience of species, habitats and ecosystem services to the impacts of climate change through collaboratively developed adaptation actions that are feasible, effective, and nature-based.

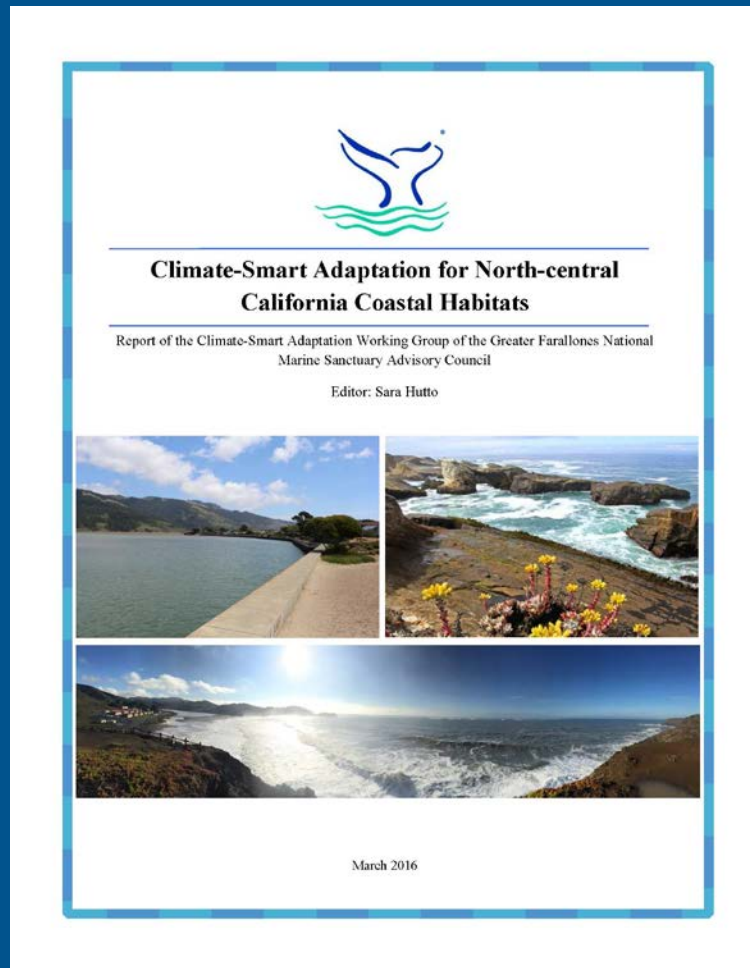
## Geographic Scope

Año Nuevo, San Mateo County to Alder Creek, Mendocino County

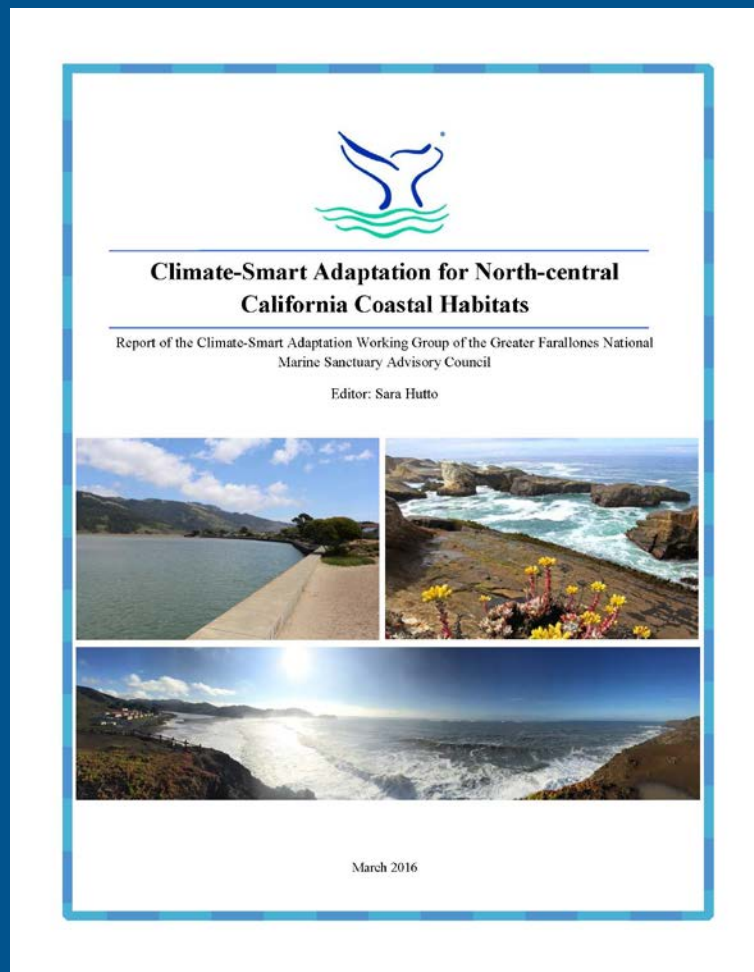


# Working Group Report

84 strategies presented  
to the Council for  
approval



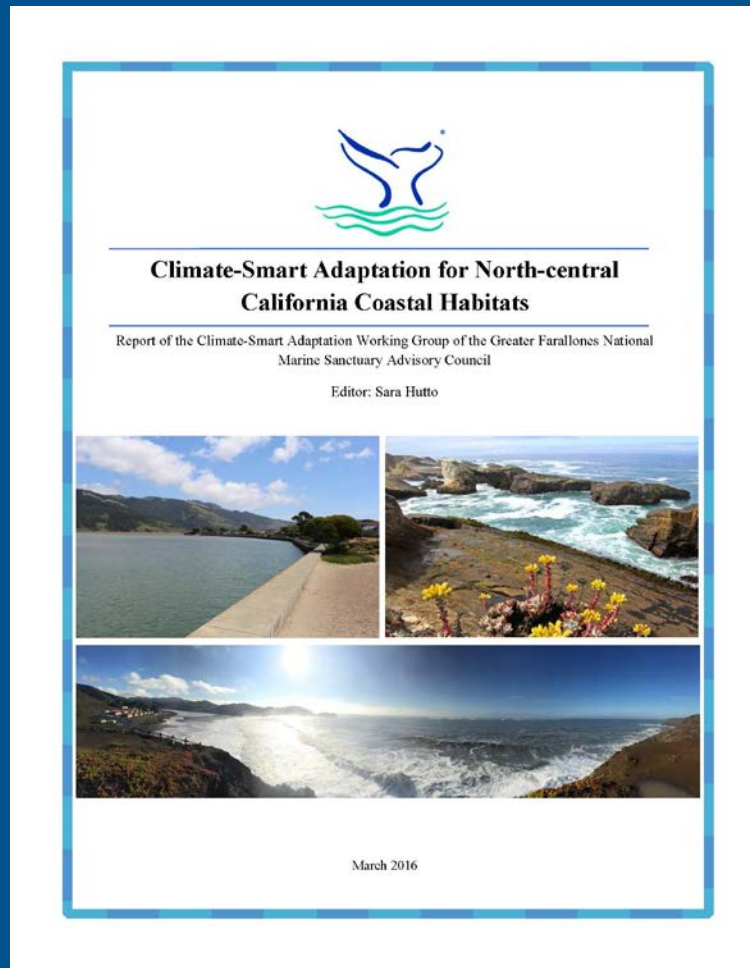
# Working Group Report



84 strategies presented to the Council for approval

76 were approved, 2 were added

# Working Group Report



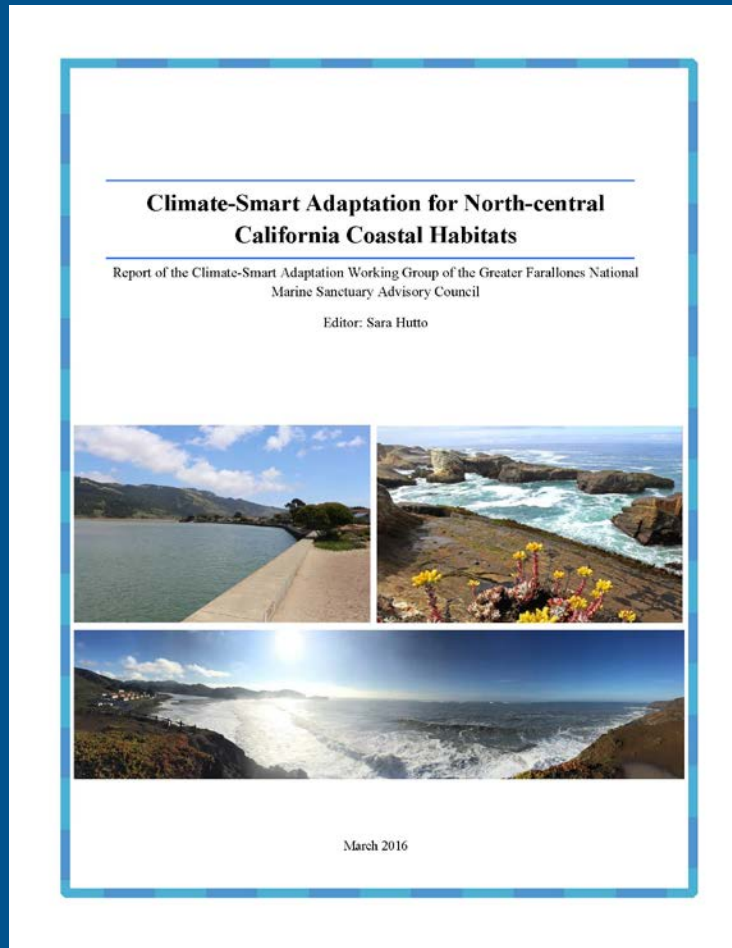
84 strategies presented to the Council for approval

76 were approved, 2 were added

78 final strategies sent to Maria from the Council either to implement or forward

# Update: Climate-Smart Adaptation

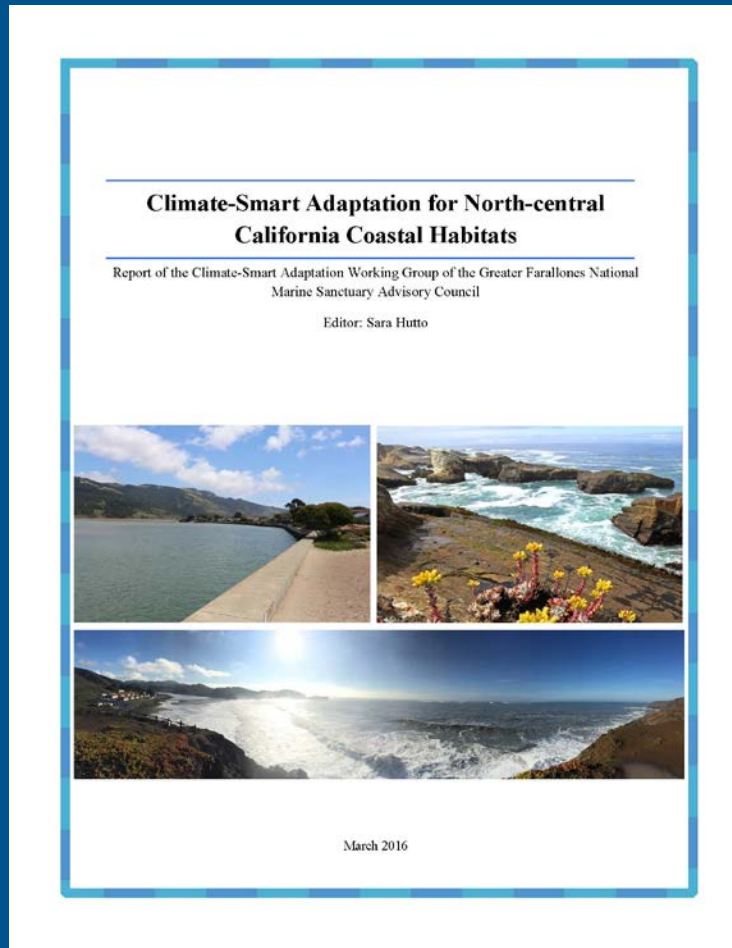
64 final strategies retained after Sanctuary review:



# Update: Climate-Smart Adaptation

64 final strategies retained after Sanctuary review:

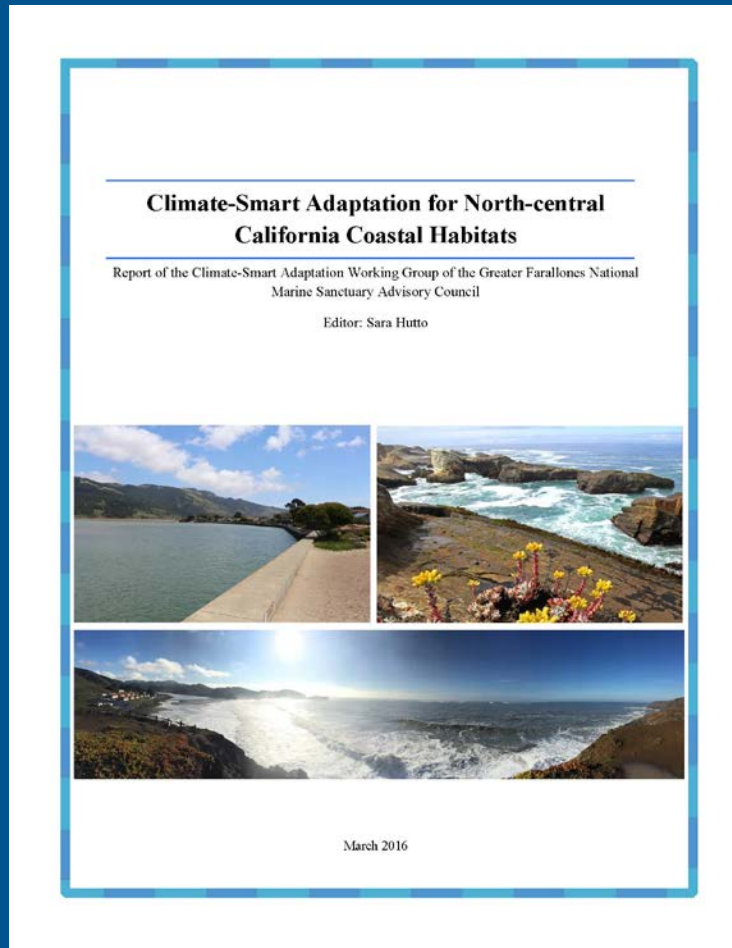
- 24 included in Climate Action Plan



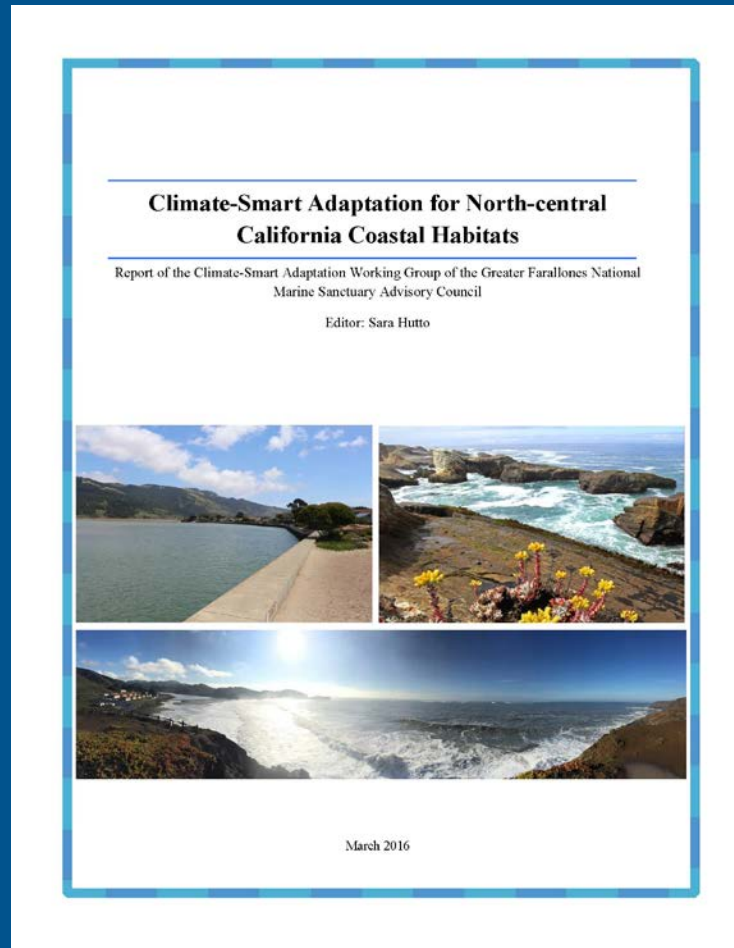
# Update: Climate-Smart Adaptation

64 final strategies retained after Sanctuary review:

- 24 included in Climate Action Plan
- All forwarded to 36 other agencies



# Update: Climate-Smart Adaptation

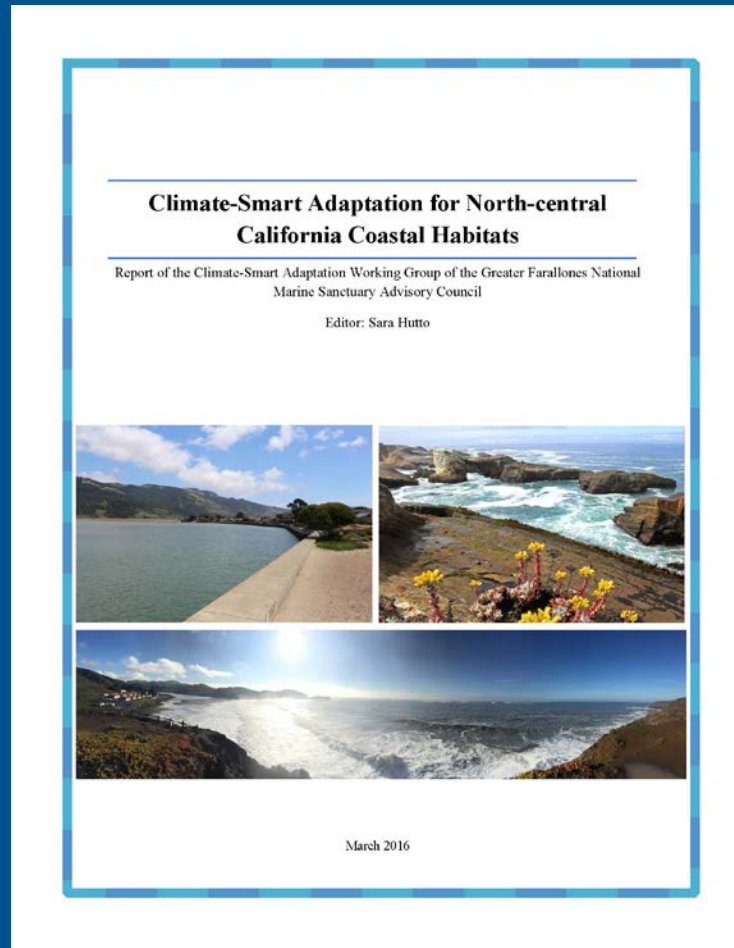


64 final strategies retained after Sanctuary review:

- 24 included in Climate Action Plan
- All forwarded to 36 other agencies
- 13 eliminated



# Update: Climate-Smart Adaptation



64 final strategies retained after Sanctuary review:

- 24 included in Climate Action Plan
- All forwarded to 36 other agencies
- 13 eliminated
- 3 added to Climate Action Plan

# Implementation: Next Steps

## **Graduate work at Romberg-Tiburon Center**

- Mapping vulnerable habitats with climate projections

# Implementation: Next Steps

## **Graduate work at Romberg-Tiburon Center**

- Mapping vulnerable habitats with climate projections

## **Bolinas Lagoon Restoration**

# Implementation: Next Steps

## **Graduate work at Romberg-Tiburon Center**

- Mapping vulnerable habitats with climate projections

## **Bolinas Lagoon Restoration**

## **Sediment Management Plan for Marin/Sonoma**

# Implementation: Next Steps

## **Graduate work at Romberg-Tiburon Center**

- Mapping vulnerable habitats with climate projections

## **Bolinas Lagoon Restoration**

## **Sediment Management Plan for Marin/Sonoma**

## **Climate Education Plan** complete by Dec 2017

# Implementation: Next Steps

## **Graduate work at Romberg-Tiburon Center**

- Mapping vulnerable habitats with climate projections

## **Bolinas Lagoon Restoration**

## **Sediment Management Plan for Marin/Sonoma**

**Climate Education Plan** complete by Dec 2017

**The Nature Conservancy's Coastal Natural Infrastructure Project** GFNMS on steering committee

# Implementation: Next Steps

## **Graduate work at Romberg-Tiburon Center**

- Mapping vulnerable habitats with climate projections

## **Bolinas Lagoon Restoration**

## **Sediment Management Plan for Marin/Sonoma**

## **Climate Education Plan** complete by Dec 2017

## **The Nature Conservancy's Coastal Natural Infrastructure Project** GFNMS on steering committee

## **Resilient Lands-Waters Initiative Map:**

<http://noaa.maps.arcgis.com/apps/MapSeries/index.html?appid=8afb7b23be6642ba8cb8ef5f7a33d925>

# Thank you!

Contact:

Sara.Hutto@noaa.gov

415-970-5253

