



Possible Changes to Monterey Bay National Marine Sanctuaries' Regulations For Zone 1 in the Northern Portion of MBNMS

**GFNMS Advisory Council Meeting
August 29, 2018**

Max Delaney, Permit Coordinator, GFNMS

Background



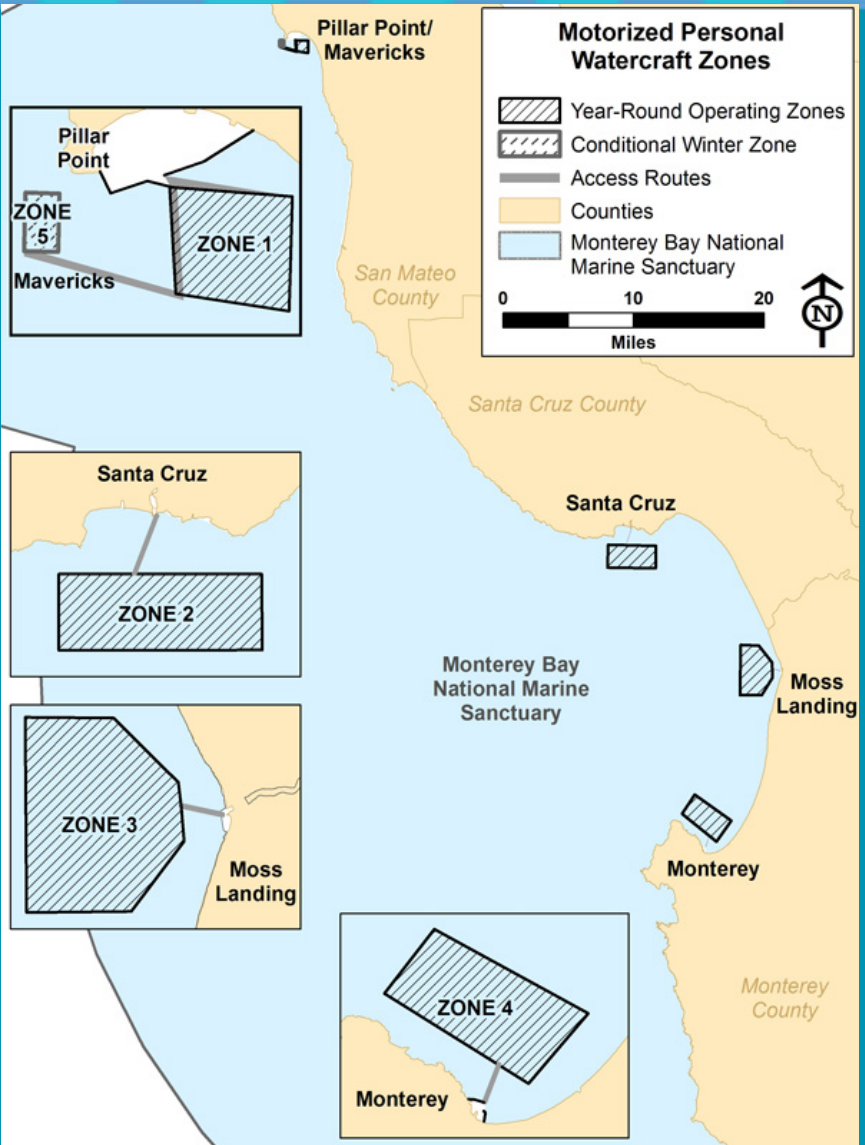
Why MPWC regulations?

To help protect sanctuary habitats and sensitive marine life, operation of motorized personal watercraft within the MBNMS has been restricted to five designated zones and access routes

(Title 15, CFR Section 922.132(a)(7) Zone boundaries described in detail in Appendix E).



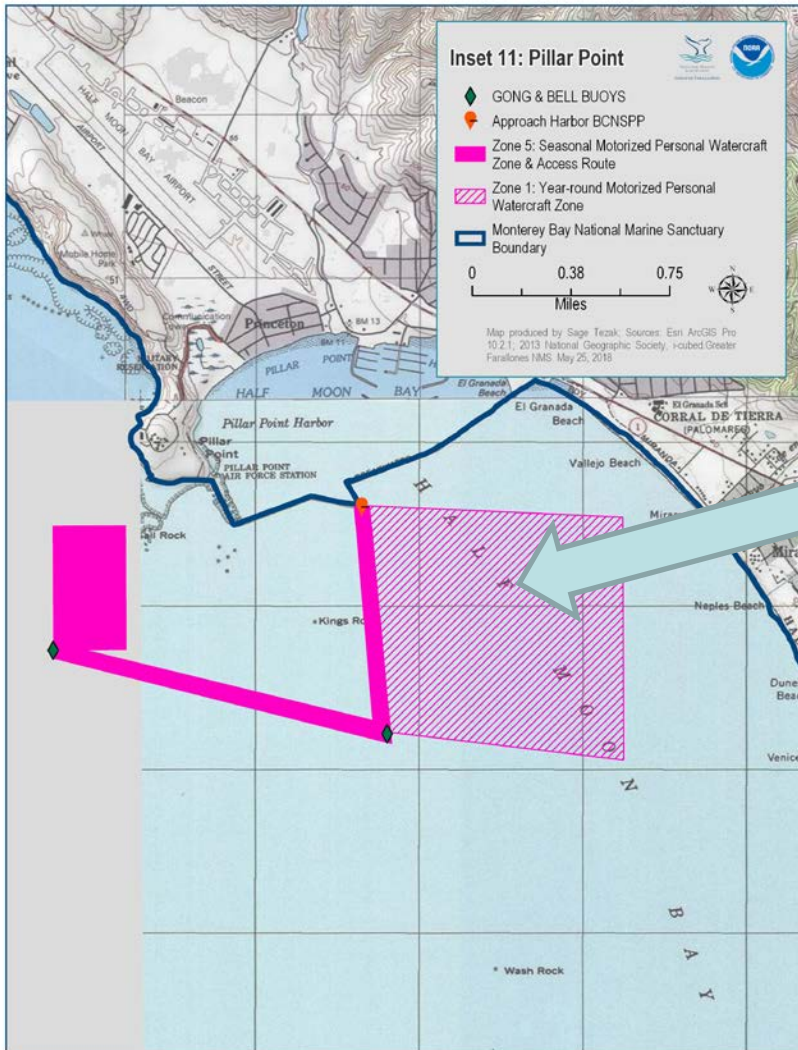
Background



5 MPWC Zones in MBNMS

(Monterey, Moss Landing, Santa Cruz, Pillar Point, Mavericks)

Background



Zone 1 Pillar Point (Half Moon Bay)

- (year-round) - accessed through Pillar Point Harbor (PPH) channel

Background / Purpose and Need

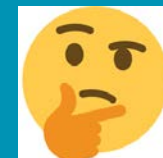


Scoping process for the Monterey Bay National Marine Sanctuary (MBNMS) Management Plan Review (MPR) completed in 2015

Currently MPWC are largely used for surf rescue during big wave days (Zone 5)...



GFNMS decided to internally review MPWC use patterns in Zone 1 based on Scoping comments to determine current level of use...

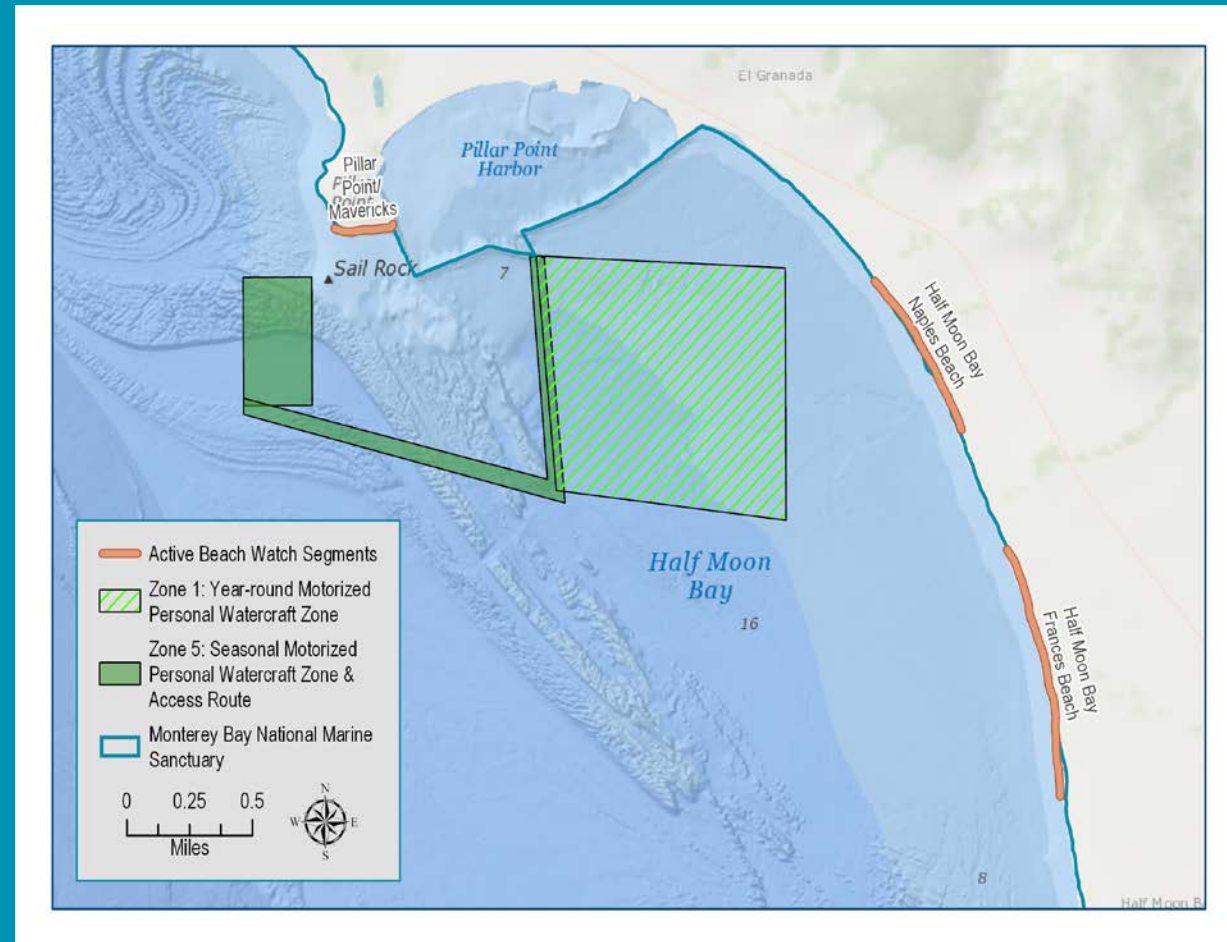


Beach Watch Monitoring



Beach Watch data was analyzed from 2 Beach Segments:

- 1) Francis Beach
- 2) Naples Beach



Beach Watch Monitoring



Beach Watch data methods:

Beach Watch surveyors collect wildlife and human use data out to 1/4 mile from shore. This distance reaches Zone 1 but does not include all of zone 1.

However, all of zone 1 can be observed from these beaches and surveyors are directed to document activities of interest (including vessel use, MPWCs) when observed outside of the count zone

These observations are documented in the comment section of each data sheet.

Beach Watch Monitoring



Beach Watch data collected since November 1, 2014

172 total survey days

TOTAL NUMBER OF MPWCS OBSERVED IN ZONE 1 = 1 MPWC

Frances Beach	No. Days
Sunday	14
Monday	6
Tuesday	1
Thursday	4
Friday	2
Saturday	61
Total No. Survey Days	88

Naples Beach	No. Days
Sunday	14
Monday	10
Tuesday	4
Wednesday	2
Thursday	4
Friday	8
Saturday	42
Total No. Survey Days	84

Total No. Survey Days (both beaches)	172
---	------------

Regulatory Change Under Consideration



Possible Regulatory Changes to Zone 1:

Eliminate Zone 1 through the MBNMS Management Plan Review (MPR) process based on the following considerations:

- 1) Lack of MPWC use (as documented by Beach Watch data)
- 2) *Difficulty and high cost of maintaining zone markers*

REQUEST GFNMS ADVISORY COUNCIL ACTION:

Staff is seeking a recommendation from the Advisory Council whether to pursue this action through the Management Plan Review process