

CBNMS Report

Michael Carver, Deputy Superintendent



- Updating CBNMS condition report. We have two data indicators workshops – Fall 2020, Spring 2021
- 2020 species inventory continues. Added 241 new species (so far) from 11 sources.
- NOAA white ships and small boats – minimal to no activity for majority of FY20
- Hypoxia mooring work – completed by BML staff
- FY21 ROV cruise postponed

CBNMS Report

Michael Carver, Deputy Superintendent



- New report from 2017 Nautilus surveys
- New report from 2018 Shimada surveys

FIRST CHARACTERIZATION OF DEEP SEA HABITATS IN CORDELL BANK NATIONAL MARINE SANCTUARY



E/V Nautilus cruise: August 6-12, 2017

Report completed December 2019
by Kaitlin Graiff & Danielle Lipski

Kaitlin.Graiff@noaa.gov Danielle.Lipski@noaa.gov

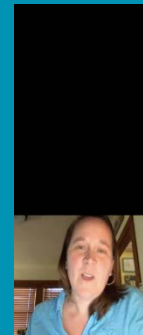
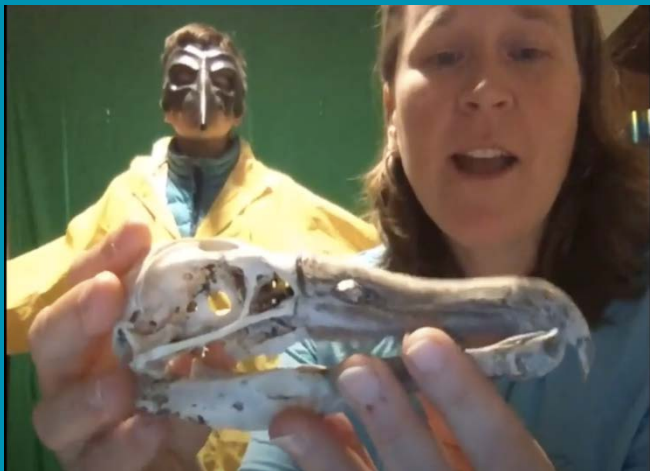
CBNMS Report

Michael Carver, Deputy Superintendent



Virtual Outreach

- NOAA Live! - Archive on YouTube
- ONMS webinar series: Nautilus highlights from 2019
- Environmental Action Committee: World Ocean Day
- Get into your Sanctuary Day- Facebook Live
- Cordell Website new home page and web stories



1. The Earth has one big ocean with many features

2. The ocean and life in the ocean shape the features of the Earth

3. The ocean is a major influence on weather and climate

4. The ocean made Earth habitable

5. The ocean supports a great diversity of life and ecosystems

6. The ocean and humans are inextricably connected

7. The ocean is largely unexplored



CBNMS Report

Michael Carver, Deputy Superintendent



Sanctuary Soundscape

- 2 years of continuous recording
- Provides a soundscape of CBNMS and GFNMS
- Ships and whales are dominant sources of sound
- Seasonal fluctuations driven by whales – highest in the fall
- Shows the presence of whales when we do not have visual observations

